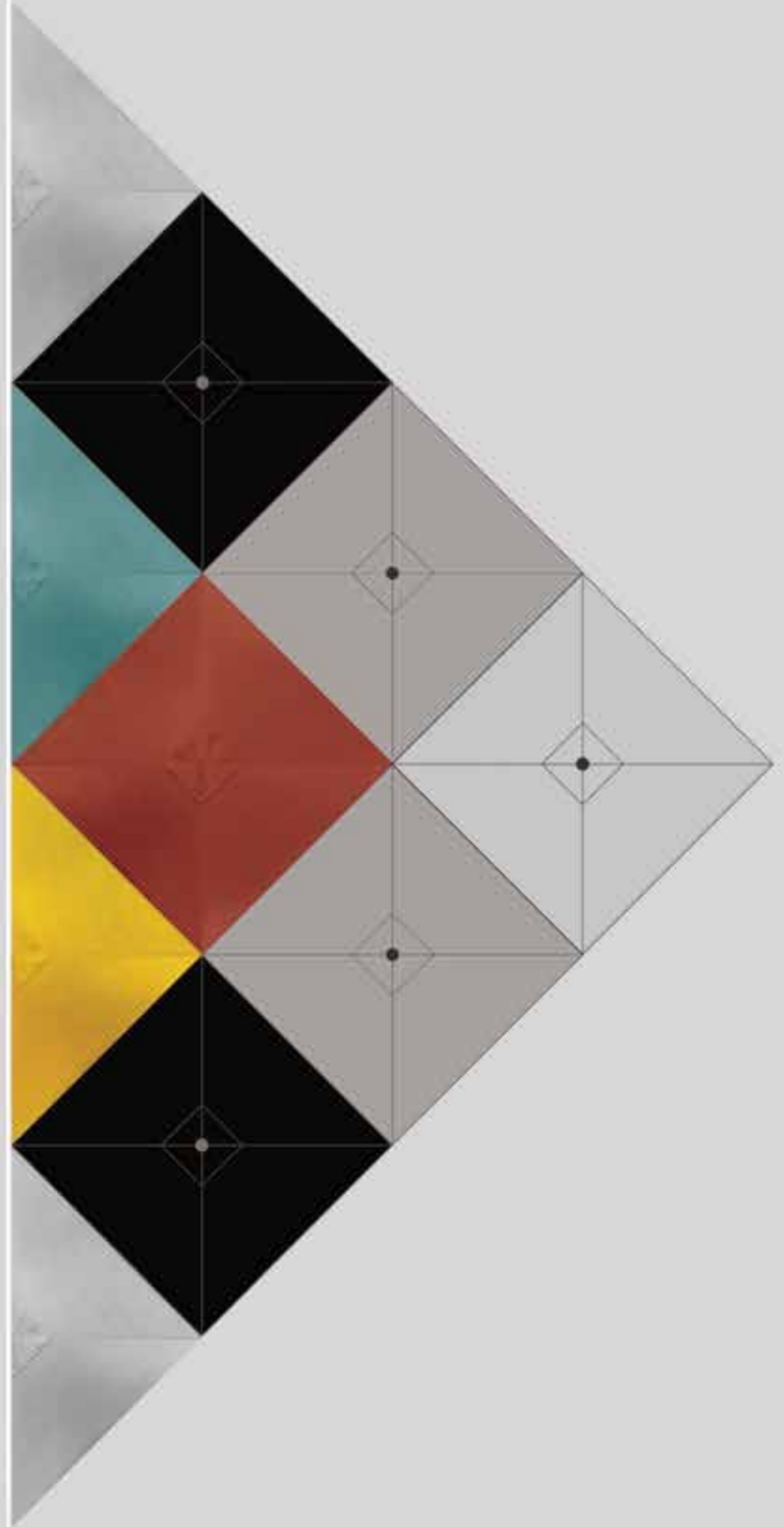


**shademaker**  
architectural shade



2019

# shademaker

architectural shade



The architectural essence of Shademaker umbrellas begins with a unified design, form and structure. From this foundation, our contemporary styling, incorporating clean anodized frames and designer performance fabrics, defines a signature look found within each umbrella in the Shademaker collection.





With exacting attention to detail, the artisans of Shademaker proudly produce our umbrellas to the highest standards for quality, strength and durability. From profile thickness to innovative functionality, each and every umbrella that bears the Shademaker name is recognized as the finest shade solution available.

### centerpost design

**libra**  
*page 4*



**astral-tc**  
*page 8*



### sidepost design

**sirius**  
*page 12*



**polaris**  
*page 16*



**orion**  
*page 20*



**galaxy**  
*page 24*



**shademaker**  
architectural shade







libra



# libra

Easy to use due to its simplistic design, the Libra style features our counterweight open and close system.

## Features:

- Counterweight open & close system
- Durable high performance hub and fittings
- External mast stem for mount kit and steel base weight options (*included*)
- Protective cover (*included*)

## MOUNT OPTIONS/BASES:

See page **28** for concrete and in-ground mounting options  
See page **29** for steel base weight options  
See page **31** for steel and cast aluminum bases

- Visit [www.resortcontract.com](http://www.resortcontract.com) for more product information

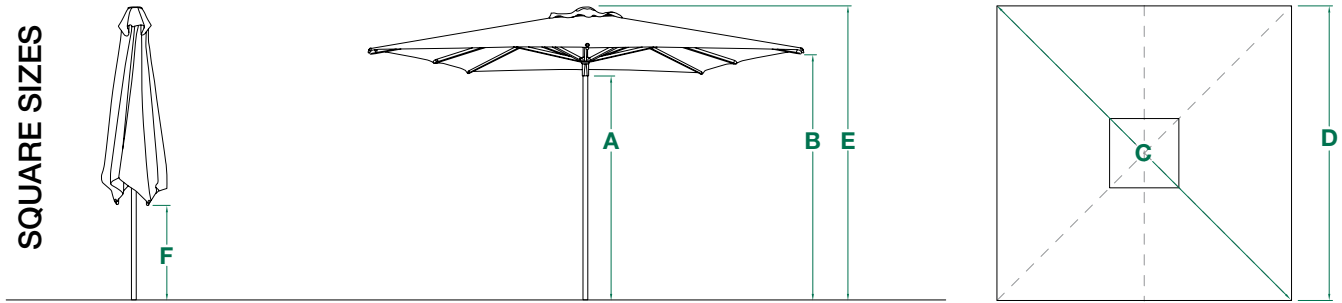
-



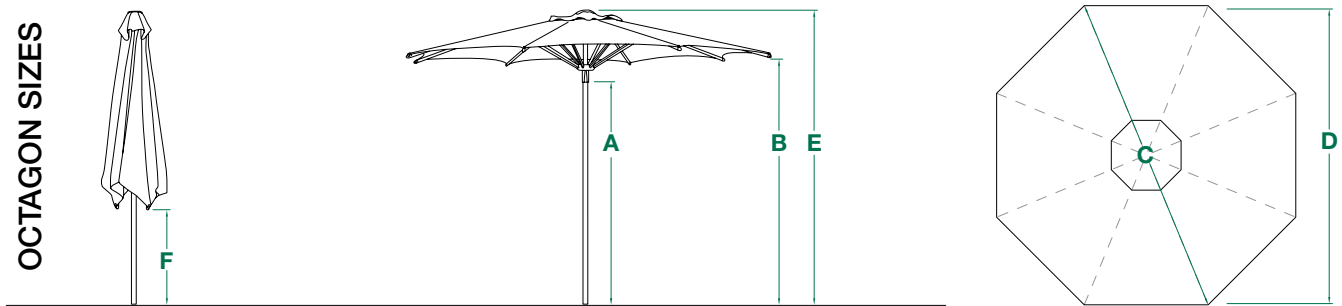
libra

## Libra Product Specifications:

### SQUARE SIZES



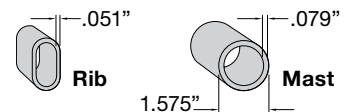
### OCTAGON SIZES



Key	Description	LIBRA-20S SQUARE	LIBRA-25S SQUARE	LIBRA-25 OCTAGON
A	Lower Hub HEIGHT (Open)	6' 1"	6' 1"	6'
B	Rib End HEIGHT (Open)	6' 5"	6' 5"	6' 8"
C	Canopy LENGTH (Diagonal)	9' 1"	11' 5"	8' 1"
D	Canopy WIDTH	6' 6"	8' 2"	7' 6"
E	Overall HEIGHT	7' 8"	8'	7' 8"
F	Rib End HEIGHT (Closed)	3' 1"	2' 2"	3' 7"

COMMERCIAL

RESIDENTIAL



Finish: Silver Shadow†

Item No.	Size		Canopy Shape	Coverage	Ribs	MSRP Price Group 1 Sunbrella® Awning Grade	MSRP Price Group 2 O'bravia™ Awning Grade Sunbrella® Furniture Grade Outdura® Furniture Grade	Min. Base Weight*
	meters	feet						
LIBRA-20S	2.0m	6' 6"	Square	43 sq. ft.	4	\$945	\$740	100 lbs.
LIBRA-25S	2.5m	8' 2"	Square	67 sq. ft.	8	\$1,195	\$980	100 lbs.
LIBRA-25	2.5m	8' 2"	Octagon	52 sq. ft.	8	\$1,145	\$925	100 lbs.

\* NOTE: Recommended minimum weight requirements for free-standing applications.

†

Striped fabrics must be ordered in pairs, due to cutting requirements.







astralto



# astral-tc

Designed to close over table and chairs.  
Only turn the crank handle only 7 times  
to open this gigantic umbrella.



## Features:

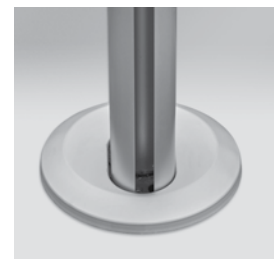
- Durable high performance hub and fittings
- Simple to operate crank lift system
- Telescopic mast
- Removable crank handle
- Galvanized internal mast stem
- Optional internal mast stem cover (*included*)
- Protective cover (*included*)

## MOUNT OPTIONS/BASES:

See page **28** for concrete and in-ground mounting options  
See page **29** for steel base weight and base frame options

- Visit [www.resortcontract.com](http://www.resortcontract.com) for more product information

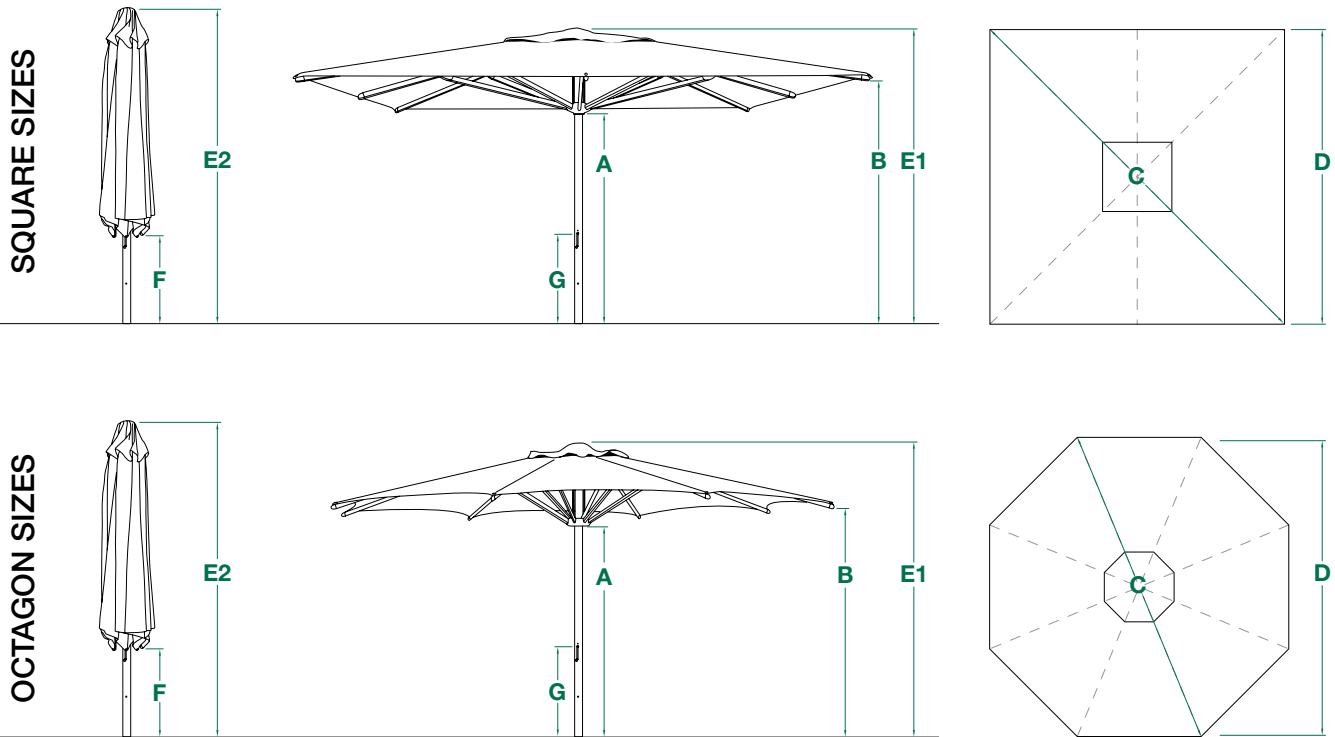
-



**optional internal  
mast stem cover**  
(shown on orion)



# Astral-TC Product Specifications:



Key	Description	ASTRAL-TC-35S SQUARE	ASTRAL-TC-40S SQUARE	ASTRAL-TC-50S SQUARE	ASTRAL-TC-50 OCTAGON
<b>A</b>	Lower Hub HEIGHT (Open)	7' 1"	7'	6' 8"	7' 1"
<b>B</b>	Rib End HEIGHT (Open)	7' 5"	7' 4"	7' 5"	7' 5"
<b>C</b>	Canopy LENGTH (Diagonal)	16' 2"	18' 6"	23' 2"	16' 4"
<b>D</b>	Canopy WIDTH	11' 5"	13' 1"	16' 4"	15' 2"
<b>E1</b>	Overall HEIGHT (Open)	9' 2"	9' 4"	9' 6"	9' 2"
<b>E2</b>	Overall HEIGHT (Closed)	11' 5"	12'	13' 3"	12' 3"
<b>F</b>	Rib End HEIGHT (Closed)	3' 4"	2' 11"	1' 8"	3' 4"
<b>G</b>	HEIGHT to Crank Handle	2' 8"	2' 8"	2' 4"	2' 8"

**COMMERCIAL**

**Finish:** Silver Shadow†

Item No.	Size		Canopy Shape	Coverage	Ribs	MSRP Price Group 1 <i>Sunbrella® Awning Grade</i>	MSRP Price Group 2 <i>O'bravia™ Awning Grade Sunbrella® Furniture Grade Outdura® Furniture Grade</i>	Min. Base Weight*
	meters	feet						
<b>ASTRAL-TC-35S</b>	3.5m	11' 5"	Square	131 sq. ft.	8	<b>\$4,240</b>	<b>\$3,390</b>	400 lbs.
<b>ASTRAL-TC-40S</b>	4.0m	13' 1"	Square	172 sq. ft.	8	<b>\$4,835</b>	<b>\$3,865</b>	500 lbs.
<b>ASTRAL-TC-50S</b>	5.0m	16' 4"	Square	266 sq. ft.	8	<b>\$5,830</b>	<b>\$4,665</b>	700 lbs.**
<b>ASTRAL-TC-50</b>	5.0m	16' 4"	Octagon	210 sq. ft.	8	<b>\$5,050</b>	<b>\$4,045</b>	600 lbs.**

\* NOTE: Recommended minimum weight requirements for free-standing applications.

\*\* Permanent mount recommended for ASTRAL-TC-50 style  
See page 28

**Striped fabrics must be ordered in pairs, due to cutting requirements.**

†









**sirius**



# sirius



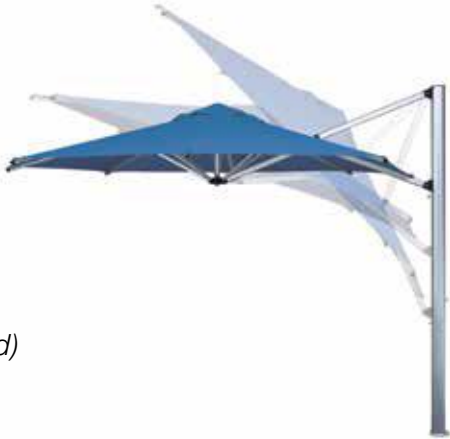
The Sirius is the original Shademaker design. This innovative design rotates 360° and tilts (front to back). When not in use, the Sirius folds back to the mast in a clean, compact manner.



The perfect solution for residential pools, spas, patios and decks.

**Features:**

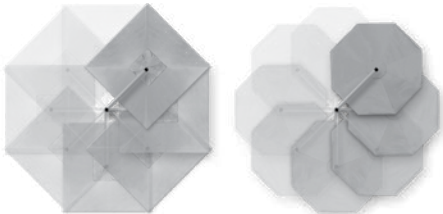
- Durable high performance hub and fittings
- Stainless steel hardware for longevity
- Simple to operate crank lift system
- Removable crank handle
- (3) vertical (front to back) tilt positions
- (8) 45° locking rotating positions
- Built-in light adapter
- Galvanized internal mast stem
- Optional internal mast stem cover *(included)*
- Protective cover *(included)*



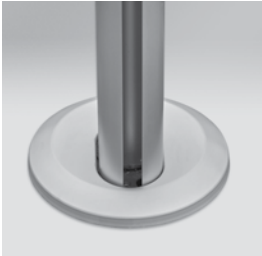
**MOUNT OPTIONS/BASES:**

See page 28 for concrete and in-ground mounting options  
See page 29 for steel base weight and base frame options

- Visit [www.resortcontract.com](http://www.resortcontract.com) for more product information



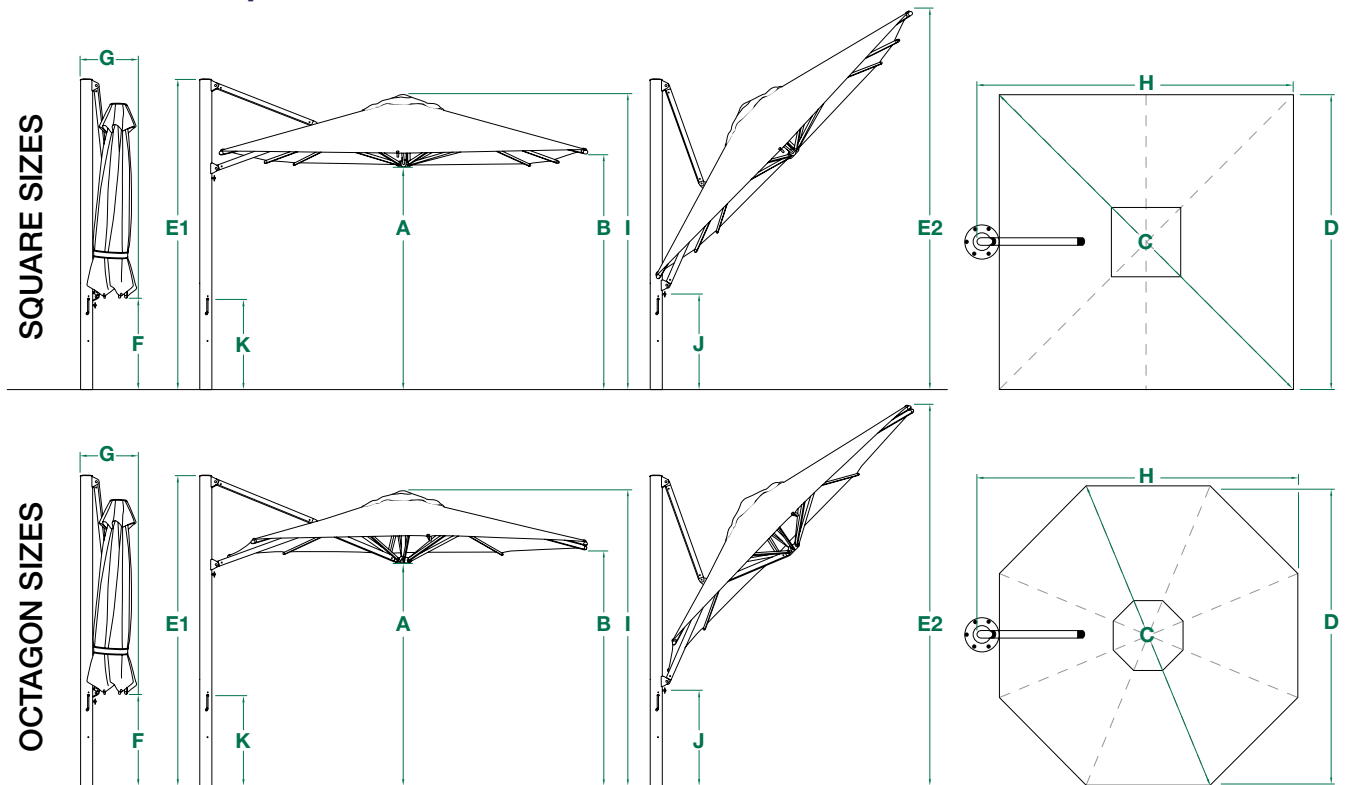
**360° rotation**



**optional internal mast stem cover**

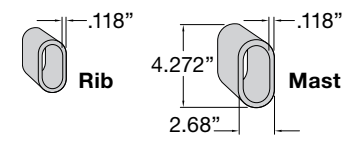


# Sirius Product Specifications:



Key	Description	SR-27S SQUARE	SR-30S SQUARE	SR-30 OCTAGON	SR-35 OCTAGON
<b>A</b>	Lower Hub HEIGHT (Open)	6' 4"	6' 3"	6' 6"	6' 8"
<b>B</b>	Rib End HEIGHT (Open)	6' 8"	6' 8"	6' 11"	7'
<b>C</b>	Canopy LENGTH (Diagonal)	12' 6"	13' 11"	8' 10"	10' 2"
<b>D</b>	Canopy WIDTH	8' 9"	9' 9"	9' 9"	11' 5"
<b>E1</b>	HEIGHT to Mast Top	8' 9"	9'	8' 11"	8' 11"
<b>E2</b>	Overall HEIGHT (Max Tilt)	13' 9"	14' 7"	12' 5"	12' 11"
<b>F</b>	Rib End HEIGHT (Closed)	2'	1' 7"	3' 5"	2' 10"
<b>G</b>	Mast End to Canopy Edge (Closed)	1' 8"	1' 8"	1' 8"	1' 8"
<b>H</b>	Mast End to Canopy Edge (Open)	9' 11"	11'	10' 5"	11' 9"
<b>I</b>	HEIGHT to Canopy Top (Open)	8' 5"	8' 5"	8' 5"	8' 5"
<b>J</b>	HEIGHT to Slider Car (Max Tilt)	3' 1"	3' 1"	3' 2"	2' 10"
<b>K</b>	HEIGHT to Crank Handle	2' 11"	2' 11"	2' 11"	2' 11"

**COMMERCIAL**  
**RESIDENTIAL**



**Finish:** Silver Shadow<sup>†</sup>

Item No.	Size		Canopy Shape	Coverage	Ribs	MSRP Price Group 1 Sunbrella® Awning Grade	MSRP Price Group 2 O'bravia™ Awning Grade Sunbrella® Furniture Grade Outdura® Furniture Grade	Min. Base Weight*
	meters	feet						
<b>SR-27S</b>	2.7m	8' 9"	Square	77 sq. ft.	8	<b>\$3,215</b>	<b>\$2,575</b>	350 lbs.
<b>SR-30S</b>	3.0m	9' 9"	Square	95 sq. ft.	8	<b>\$3,570</b>	<b>\$2,865</b>	350 lbs.
<b>SR-30</b>	3.0m	9' 9"	Octagon	75 sq. ft.	8	<b>\$3,090</b>	<b>\$2,485</b>	350 lbs.
<b>SR-35</b>	3.5m	11' 5"	Octagon	103 sq. ft.	8	<b>\$3,470</b>	<b>\$2,770</b>	450 lbs.

\* NOTE: Recommended minimum weight requirements for free-standing applications.  
†

**STRIPED FABRICS NOT AVAILABLE ON THIS STYLE.**

**shademaker**  
architectural shade





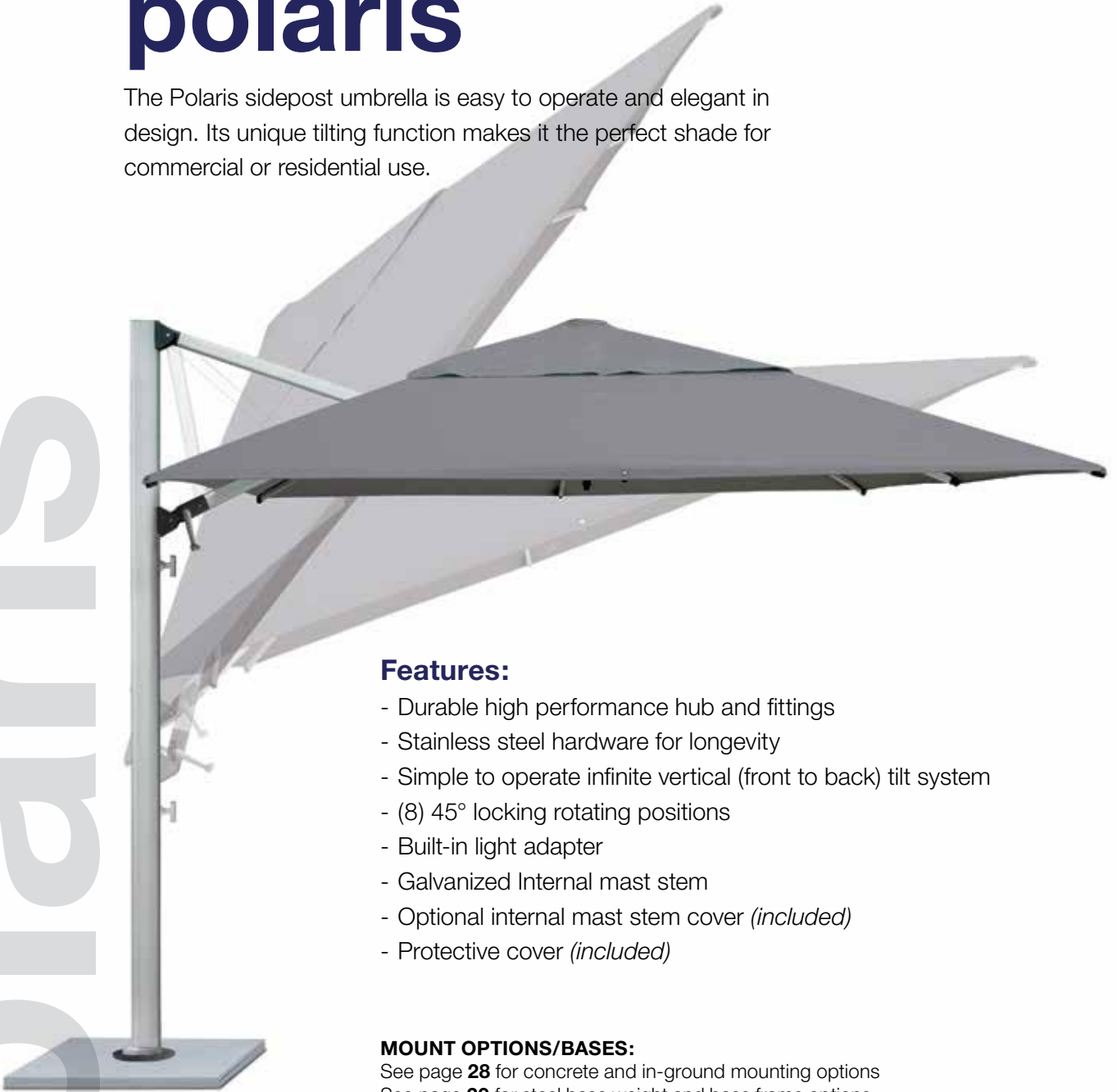


**polaris**



# polaris

The Polaris sidepost umbrella is easy to operate and elegant in design. Its unique tilting function makes it the perfect shade for commercial or residential use.



## Features:

- Durable high performance hub and fittings
- Stainless steel hardware for longevity
- Simple to operate infinite vertical (front to back) tilt system
- (8) 45° locking rotating positions
- Built-in light adapter
- Galvanized Internal mast stem
- Optional internal mast stem cover (*included*)
- Protective cover (*included*)

## MOUNT OPTIONS/BASES:

See page **28** for concrete and in-ground mounting options

See page **29** for steel base weight and base frame options

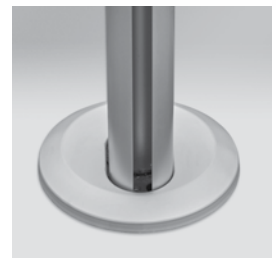
- Visit [www.resortcontract.com](http://www.resortcontract.com) for more product information



**360° rotation**



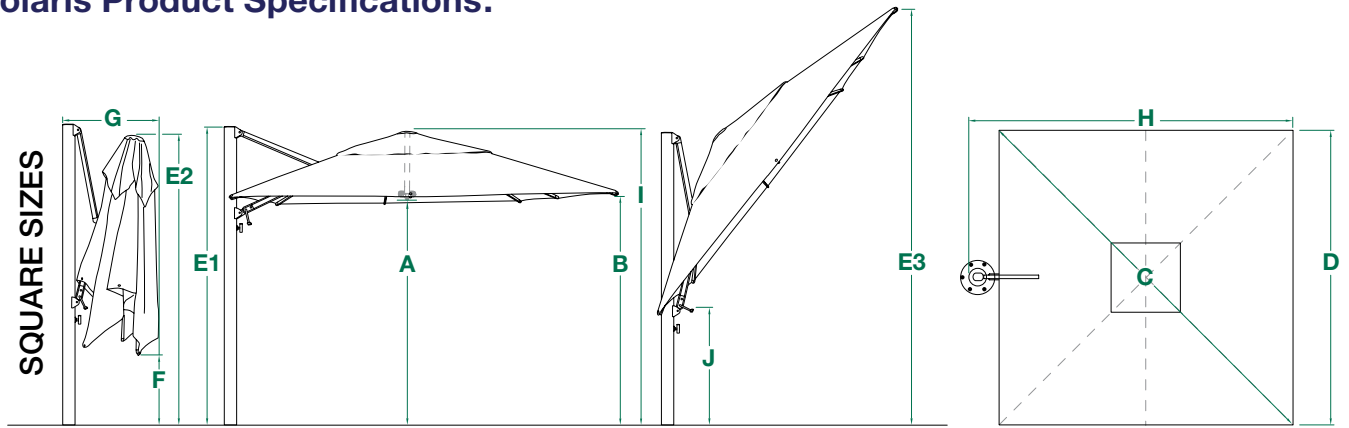
**effortless crank & tilt function**



**optional internal mast stem cover**



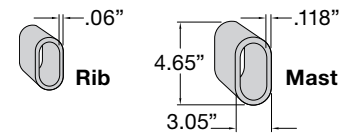
## Polaris Product Specifications:



Key	Description	POLARIS-30S SQUARE	POLARIS-35S SQUARE	POLARIS-40S SQUARE
<b>A</b>	Lower Hub HEIGHT	7'	7' 6"	7' 8"
<b>B</b>	Rib End HEIGHT (Open)	7'	7' 3"	7' 3"
<b>C</b>	Canopy LENGTH (Diagonal)	13' 11"	16' 3"	18' 7"
<b>D</b>	Canopy WIDTH	9' 10"	11' 6"	13' 1"
<b>E1</b>	HEIGHT to Mast Top	9' 2"	9' 5"	9' 6"
<b>E2</b>	HEIGHT to Canopy Top (Closed)	9' 4"	9' 6"	10' 2"
<b>E3</b>	HEIGHT to Rib End (Max Tilt)	15' 6"	16' 7"	17' 11"
<b>F</b>	Rib End HEIGHT (Closed)	2' 4"	1' 4"	1' 1"
<b>G</b>	Mast End to Canopy Edge (Closed)	1' 7"	1' 7"	1' 8"
<b>H</b>	Mast End to Canopy Edge (Open)	11'	12' 9"	14' 3"
<b>I</b>	HEIGHT to Canopy Top (Open)	8' 8"	9' 3"	9' 8"
<b>J</b>	HEIGHT to Crank Handle (Max Tilt)	3' 11"	3'	3' 8"

**COMMERCIAL**

**RESIDENTIAL**



**Finish:** Silver Shadow<sup>†</sup>

Item No.	Size		Canopy Shape	Coverage	Ribs	MSRP Price Group 1 Sunbrella® Awning Grade	MSRP Price Group 2 O'bravia™ Awning Grade Sunbrella® Furniture Grade Outdura® Furniture Grade	Min. Base Weight*
	meters	feet						
<b>POLARIS-30S</b>	3.0m	9' 9"	Square	95 sq. ft.	8	<b>\$4,120</b>	<b>\$3,295</b>	450 lbs.
<b>POLARIS-35S</b>	3.5m	11' 5"	Square	131 sq. ft.	8	<b>\$4,665</b>	<b>\$3,735</b>	550 lbs.
<b>POLARIS-40S</b>	4.0m	13' 1"	Square	172 sq. ft.	8	<b>\$5,175</b>	<b>\$4,140</b>	750 lbs.**

\* NOTE: Recommended minimum weight requirements for free-standing applications.

\*\* Permanent mount recommended for POLARIS-40S style  
See page 28

†

**STRIPED FABRICS NOT AVAILABLE ON THIS STYLE.**









orion



# orion

Our best-selling sidepost style rotates 360° and is the ideal solution for most commercial applications.

## Features:

- Durable high performance hub and fittings
- High-grade stainless steel cable
- Simple to operate crank lift system
- Removable crank handle
- (8) 45° locking rotating positions
- Built-in light adapter
- Galvanized internal mast stem
- Optional internal mast stem cover *(included)*
- Protective cover *(included)*

**Canopy structure easily detaches for storage**

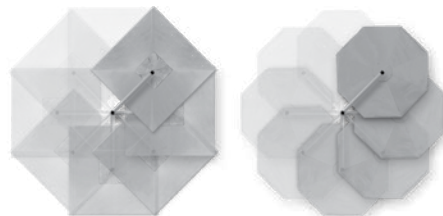


## MOUNT OPTIONS/BASES:

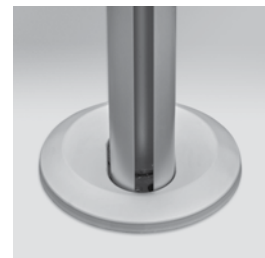
See page 28 for concrete and in-ground mounting options

See page 29 for steel base weight and base frame options

– Visit [www.resortcontract.com](http://www.resortcontract.com) for more product information



**360° rotation**

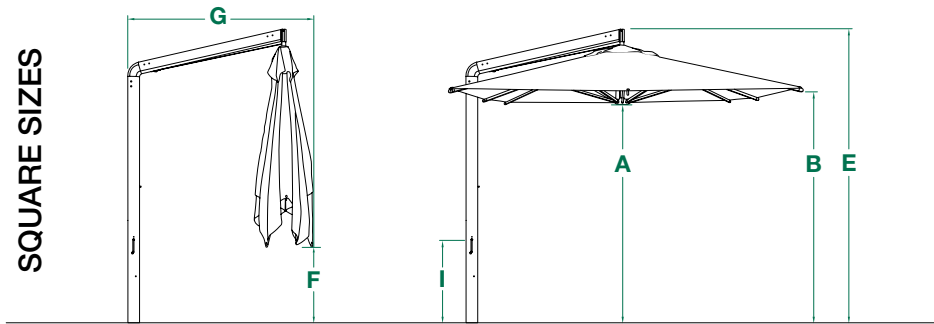


**optional internal mast stem cover**

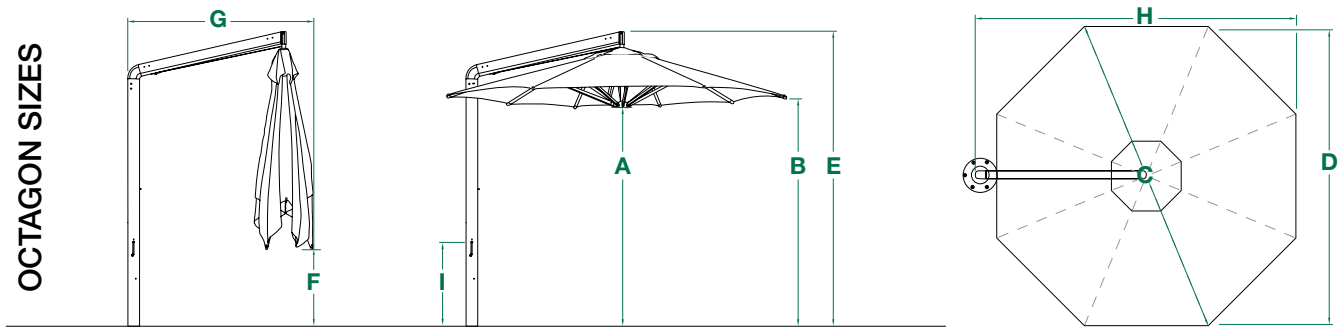


# Orion Product Specifications:

SQUARE SIZES

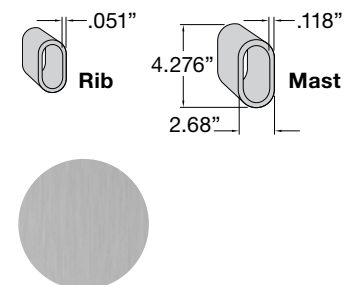


OCTAGON SIZES



Key	Description	OR-27S SQUARE	OR-30S SQUARE	OR-30 OCTAGON	OR-35 OCTAGON	OR-40 OCTAGON
<b>A</b>	Lower Hub HEIGHT (Open)	6' 8"	7'	6' 7"	7' 2"	7' 1"
<b>B</b>	Rib End HEIGHT (Open)	6' 9"	6' 11"	7'	7' 4"	7' 4"
<b>C</b>	Canopy LENGTH (Diagonal)	12' 6"	13' 10"	9' 9"	11' 5"	13' 1"
<b>D</b>	Canopy WIDTH	8' 9"	9' 9"	8' 8"	10' 2"	11' 8"
<b>E</b>	Overall HEIGHT	9' 3"	9' 7"	8' 11"	9' 4"	9' 10"
<b>F</b>	Rib End HEIGHT (Closed)	2' 4"	1' 9"	3' 6"	2' 9"	2' 6"
<b>G</b>	Mast End to Canopy Edge (Closed)	5' 9"	6' 2"	5' 4"	6' 3"	7' 3"
<b>H</b>	Mast End to Canopy Edge (Open)	9' 6"	10' 6"	9' 4"	11' 4"	12' 3"
<b>I</b>	HEIGHT to Crank Handle	3' 1"	3' 1"	3' 1"	3' 1"	3' 1"

## COMMERCIAL



Finish: Silver Shadow†

Item No.	Size		Canopy Shape	Coverage	Ribs	MSRP Price Group 1 Sunbrella® Awning Grade	MSRP Price Group 2 O'bravia™ Awning Grade Sunbrella® Furniture Grade Outdura® Furniture Grade	Min. Base Weight*
	meters	feet						
<b>OR-27S</b>	2.7m	8' 9"	Square	77 sq. ft.	8	<b>\$3,745</b>	<b>\$3,000</b>	350 lbs.
<b>OR-30S</b>	3.0m	9' 9"	Square	95 sq. ft.	8	<b>\$3,895</b>	<b>\$3,120</b>	350 lbs.
<b>OR-30</b>	3.0m	9' 9"	Octagon	75 sq. ft.	8	<b>\$3,715</b>	<b>\$2,925</b>	350 lbs.
<b>OR-35</b>	3.5m	11' 5"	Octagon	103 sq. ft.	8	<b>\$4,080</b>	<b>\$3,260</b>	450 lbs.
<b>OR-40</b>	4.0m	13' 1"	Octagon	134 sq. ft.	8	<b>\$4,470</b>	<b>\$3,580</b>	500 lbs.

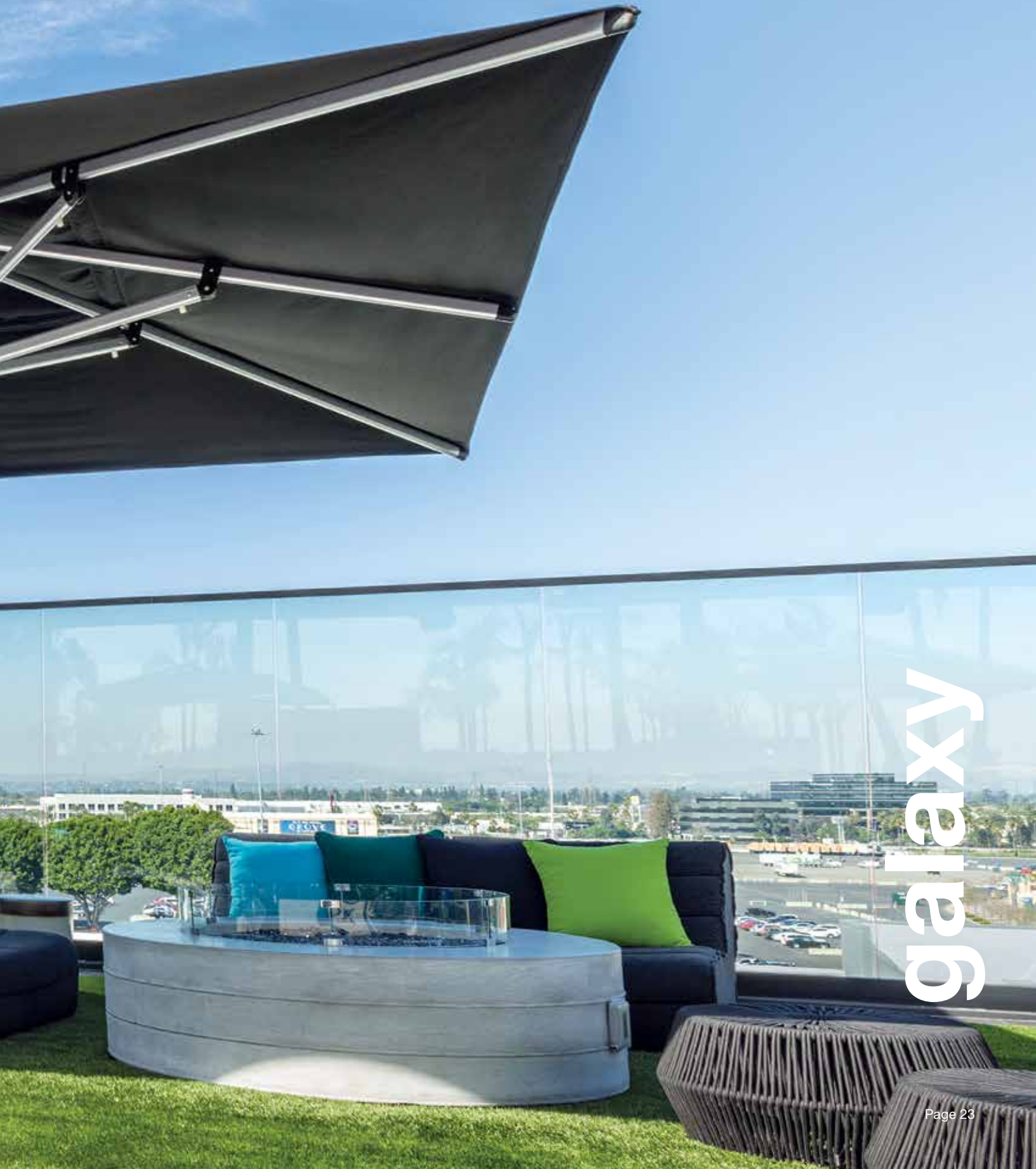
\* NOTE: Recommended minimum weight requirements for free-standing applications.

†

**Striped fabrics must be ordered in pairs, due to cutting requirements.**







galaxy



# galaxy

Our Galaxy is the GIANT of all sidepost styles; superior in design, durability and size.

## Features:

- Durable high performance hub and fittings
- Internal mast stem
- Protective cover (*included*)



**NOTE: It is imperative that the eight (8) spacer buttons (white plastic cups/screws) are installed after the canopy is opened for the first time.**

## MOUNT OPTIONS/BASES:

See page **28** for concrete and in-ground mounting options

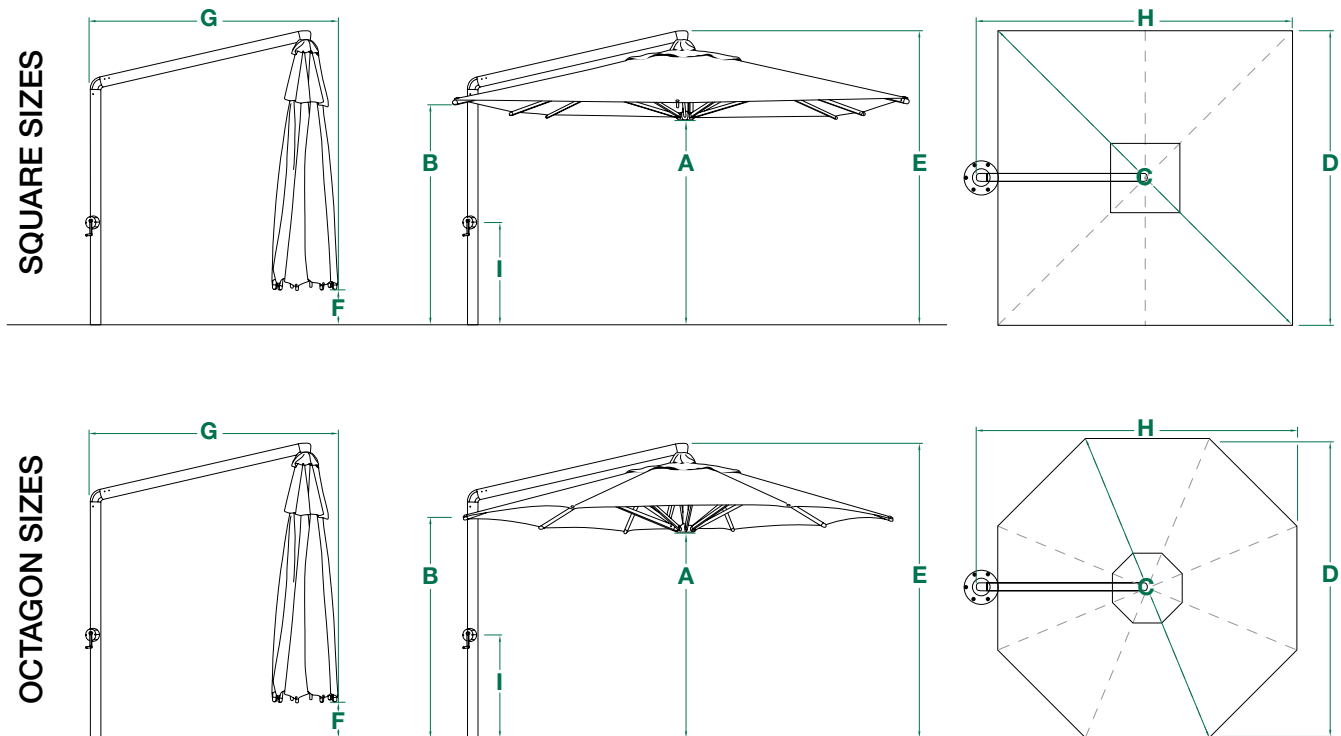
See page **30** for heavy-duty steel base option

– Visit [www.resortcontract.com](http://www.resortcontract.com) for more product information

–

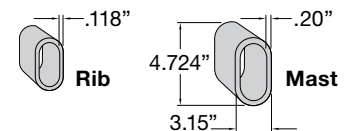


## Galaxy Product Specifications:



Key	Description	GALAXY-35S SQUARE	GALAXY-40S SQUARE	GALAXY-50 OCTAGON
<b>A</b>	Lower Hub HEIGHT (Open)	7' 6"	7' 1"	7' 5"
<b>B</b>	Rib End HEIGHT (Open)	7' 11"	7' 5"	7' 6"
<b>C</b>	Canopy LENGTH (Diagonal)	16' 5"	18' 8"	16' 4"
<b>D</b>	Canopy WIDTH	11' 7"	13' 3"	15' 6"
<b>E</b>	Overall HEIGHT	10' 1"	9' 10"	10' 2"
<b>F</b>	Rib End HEIGHT (Closed)	1' 4"	1' 2"	1' 2"
<b>G</b>	Mast End to Canopy Edge (Closed)	7' 9"	7' 8"	8' 3"
<b>H</b>	Mast End to Canopy Edge (Open)	12' 11"	14' 6"	16' 6"
<b>I</b>	HEIGHT to Crank Handle	3' 1"	3' 1"	3' 1"

### COMMERCIAL



Finish: Silver Shadow†

Item No.	Size		Canopy Shape	Coverage	Ribs	MSRP Price Group 1 Sunbrella® Awning Grade	MSRP Price Group 2 O'bravia™ Awning Grade Sunbrella® Furniture Grade Outdura® Furniture Grade	Min. Base Weight
	meters	feet						
<b>GALAXY-35S</b>	3.5m	11' 5"	Square	131 sq. ft.	8	<b>\$6,585</b>	<b>\$5,260</b>	1,000 lbs.*
<b>GALAXY-40S</b>	4.0m	13' 1"	Square	172 sq. ft.	8	<b>\$7,450</b>	<b>\$5,960</b>	1,400 lbs.*
<b>GALAXY-50</b>	5.0m	16' 4"	Octagon	210 sq. ft.	8	<b>\$7,855</b>	<b>\$6,280</b>	1,800 lbs.*

\* Permanent mount recommended for all GALAXY styles

See page 28

†

NOTE: Warranty will be voided if spacer buttons are not installed properly.

Striped fabrics must be ordered in pairs, due to cutting requirements.

**shademaker**  
architectural shade







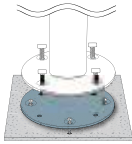
# bases & mount options

# mount options

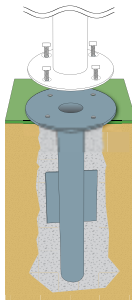
Use of the Mount Kits provide substantial cost savings and creates the preferred small footprint.

All Shademaker styles are designed to be mounted. Our Mount Kits (concrete and in-ground applications) are the recommended and preferred method to properly secure your umbrella. \*BOLTS NOT INCLUDED.

## mount kits\* for libra styles

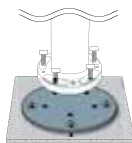


Item No.	Description	Plate Dia.	Thickness	Weight	Cube	MSRP
<b>MKC21</b>	concrete mount kit	8.46"	.47"	8 lbs.	.05	<b>\$100</b>
		<b>CASE PACK</b>	<b>CASE WEIGHT</b>	<b>CASE CUBE</b>		
		10	83 lbs.	.46		

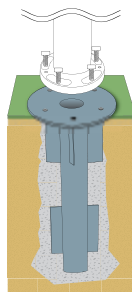


Item No.	Description	Plate Dia.	Thickness	Weight	Cube	MSRP
<b>MKG21</b>	in-ground mount kit	8.39"	.39"	14 lbs.	1.08	<b>\$145</b>
		<b>Stem Dia: 2.38"</b>				
		<b>Depth: 19.6"</b>				
		<b>CASE PACK</b>	<b>CASE WEIGHT</b>	<b>CASE CUBE</b>		
		4	59 lbs.	4.33		

## mount kits\* for astral-tc, orion, polaris and sirius styles

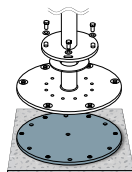


Item No.	Description	Plate Dia.	Thickness	Weight	Cube	MSRP
<b>MKC17</b>	concrete mount kit	8.5"	.63"	10 lbs.	.08	<b>\$115</b>
		<b>CASE PACK</b>	<b>CASE WEIGHT</b>	<b>CASE CUBE</b>		
		5	51 lbs.	.39		

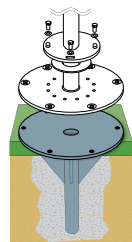


Item No.	Description	Plate Dia.	Thickness	Weight	Cube	MSRP
<b>MKG17</b>	in-ground mount kit	6.3"	.38"	12 lbs.	.70	<b>\$160</b>
		<b>Stem Dia: 2.38"</b>				
		<b>Depth: 19.53"</b>				
		<b>CASE PACK</b>	<b>CASE WEIGHT</b>	<b>CASE CUBE</b>		
		2	23 lbs.	1.4		

## mount kits\* for galaxy styles



Item No.	Description	Plate Dia.	Thickness	Weight	Cube	MSRP
<b>GMKC21</b>	concrete mount kit	15.125"	.64"	34 lbs.	.38	<b>\$285</b>



Item No.	Description	Plate Dia.	Thickness	Weight	Cube	MSRP
<b>GMKG21</b>	in-ground mount kit	15.75"	.63"	55 lbs.	4.33	<b>\$405</b>
		<b>Stem Dia: 2.7"</b>				
		<b>Depth: 18.75"</b>				



# steel base weights & frame

Shademaker steel base weights may be purchased individually or in multiple sizes and stacked to meet base weight requirements.

## steel base weights for libra styles



Black finish

(square)



Black finish

(round)

Item No.	Weight	Size	Thickness	MSRP
<b>SB50SQ*</b>	50 lbs.	17"	.675"	<b>\$260</b>
<b>SB100SQ</b>	100 lbs.	24"	.675"	<b>\$425</b>
<b>SB125SQ</b>	125 lbs.	27"	.675"	<b>\$545</b>

Item No.	Weight	Size	Thickness	MSRP
<b>SB50R*</b>	50 lbs.	19"	.675"	<b>\$320</b>
<b>SB100R</b>	100 lbs.	27"	.675"	<b>\$510</b>
<b>SB125R</b>	125 lbs.	30"	.675"	<b>\$630</b>

## steel base weight (stacked) combinations



**\*NOTE:** When stacking steel base weights, the **SB50R** and **SB50SQ** CAN ONLY BE USED AS THE TOP WEIGHT (1) STACKED.

**300 lbs.:** (2) SB125SQ + (1) SB50SQ (shown)

## geomet steel base weight for astral-tc, orion, polaris and sirius styles

**NOTE: SM PLATE (Adapter Plate) REQUIRED.**



Silver finish



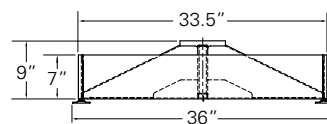
**(SM) adapter plate**  
for **geomet**  
**SBGC200SQ**

Black finish

Item No.	Weight	Size	Thickness	MSRP
<b>SBGC200SQ</b>	213 lbs.	36"	.6"	<b>\$1,575</b>

Item No.	Weight	Size	Thickness	MSRP
<b>SM PLATE</b>	8 lbs.	8.5"	.5"	<b>\$55</b>

## steel base frame for astral-tc, orion, polaris and sirius styles



Accommodates 16" stone pavers/weights (sold separately).

Item No.	Weight	Cube	MSRP
<b>BC05XM</b>	72 lbs.	8.8	<b>\$605</b>

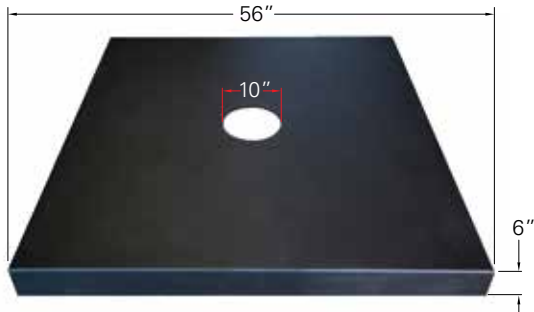
NOTE: SM PLATE (Adapter Plate) **NOT** REQUIRED



Stone pavers/weights not available through Shademaker.

# zeus

## heavy-duty steel base for galaxy styles



- Durable black powder coated steel lid
- Industrial grade steel frame
- Adjustable feet for leveling
- Reinforced padded corners to protect surfaces
- MADE IN THE USA

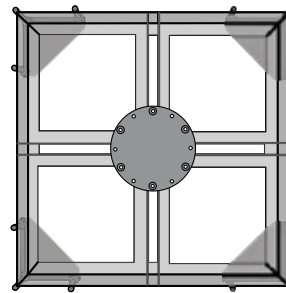
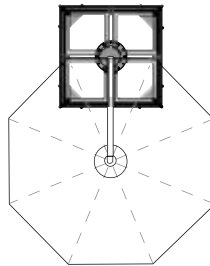
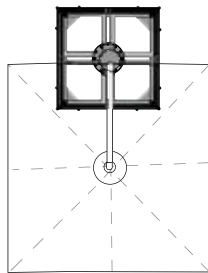


**SB100SQ** steel base weights  
MUST BE USED  
(each sold separately)

Item No.	Weight	MSRP
<b>Z56569</b>	225 lbs.	<b>\$3,800</b>

See Base Weight Matrix  
page **32**

### Center Mount



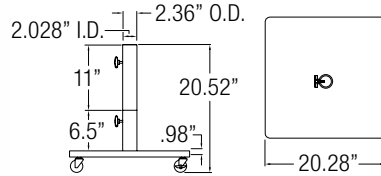
fits **all Galaxy styles**





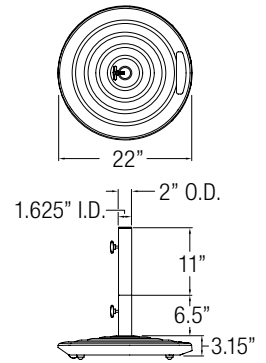
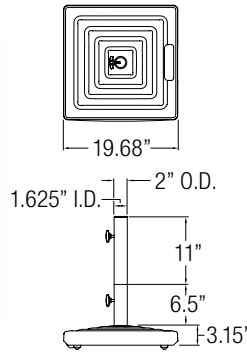
# additional **bases** for **libra**

**steel base w/casters** for libra styles



Item No.	Finish	Weight	Cube	Pallet	MSRP
<b>BSK1209</b>	black	120 lbs.	1.4	16	<b>\$540</b>

**cast aluminum bases** for libra styles

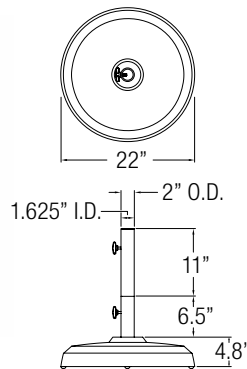


**monaco (square) w/wheels & handle**

Item No.	Finish	Weight	Cube	Pallet	MSRP
<b>BKMSQ1005T</b>	platinum	100 lbs.	1.75	24	<b>\$510</b>
<b>BKMSQ1009</b>	black	100 lbs.	1.75	24	<b>\$510</b>

**monaco (round) w/wheels & handle**

Item No.	Finish	Weight	Cube	Pallet	MSRP
<b>BKM1005T</b>	platinum	100 lbs.	1.75	24	<b>\$510</b>
<b>BKM1009</b>	black	100 lbs.	1.75	24	<b>\$510</b>

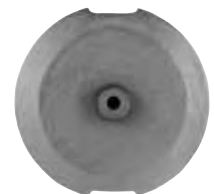
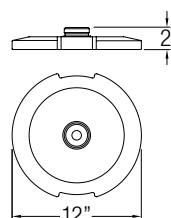


**commercial**

Item No.	Finish	Weight	Cube	Pallet	MSRP
<b>BA1509</b>	black	150 lbs.	2.8	12	<b>\$615</b>

**add-on weight** for monaco styles

- Optional cast iron weight adds 30 lbs. to our cast aluminum base.



Item No.	Weight	MSRP
<b>BW30</b>	30 lbs.	<b>\$90</b>

# base weight matrix

Item No.	Size	Canopy Shape	Minimum Base Weight	Mount and Base Options		
				Recommended	Alternate 1	Alternate 2
<b>LIBRA-20S</b>	6' 6"	SQ	100 lbs.	(SB) steel base weight	BKMSQ1005T, BKMSQ1009	BSK1209
<b>LIBRA-25S</b>	8' 2"	SQ	100 lbs.	(SB) steel base weight	BKMSQ1005T, BKMSQ1009	BSK1209
<b>LIBRA-25</b>	8' 2"	OCT	100 lbs.	(SB) steel base weight	BKM1005T, BKM1009	BA1509
<b>ASTRAL-TC-35S</b>	11' 5"	SQ	400 lbs.	mount kit	BC05XM	(2) SBGC200SQ
<b>ASTRAL-TC-40S</b>	13' 1"	SQ	500 lbs.	mount kit	BC05XM	(3) SBGC200SQ
<b>ASTRAL-TC-50S</b>	16' 4"	SQ	700 lbs.	mount kit	(4) SBGC200SQ	n/a
<b>ASTRAL-TC-50</b>	16' 4"	OCT	600 lbs.	mount kit	BC05XM	(3) SBGC200SQ
<b>SR-27S</b>	8' 9"	SQ	350 lbs.	mount kit	BC05XM	(2) SBGC200SQ
<b>SR-30S</b>	9' 9"	SQ	350 lbs.	mount kit	BC05XM	(2) SBGC200SQ
<b>SR-30</b>	9' 9"	OCT	350 lbs.	mount kit	BC05XM	(2) SBGC200SQ
<b>SR-35</b>	11' 5"	OCT	450 lbs.	mount kit	BC05XM	(2) SBGC200SQ
<b>POLARIS-30S</b>	9' 9"	SQ	450 lbs.	mount kit	BC05XM	(2) SBGC200SQ
<b>POLARIS-35S</b>	11' 5"	SQ	550 lbs.	mount kit	BC05XM	(3) SBGC200SQ
<b>POLARIS-40S</b>	13' 1"	SQ	750 lbs.	mount kit	(4) SBGC200SQ	n/a
<b>OR-27S</b>	8' 9"	SQ	350 lbs.	mount kit	BC05XM	(2) SBGC200SQ
<b>OR-30S</b>	9' 9"	SQ	350 lbs.	mount kit	BC05XM	(2) SBGC200SQ
<b>OR-30</b>	9' 9"	OCT	350 lbs.	mount kit	BC05XM	(2) SBGC200SQ
<b>OR-35</b>	11' 5"	OCT	450 lbs.	mount kit	BC05XM	(2) SBGC200SQ
<b>OR-40</b>	13' 1"	OCT	500 lbs.	mount kit	BC05XM	(3) SBGC200SQ
<b>GALAXY-35S*</b>	11' 5"	SQ	1,000 lbs.	galaxy mount kit	zeus	n/a
<b>GALAXY-40S*</b>	13' 1"	SQ	1,400 lbs.	galaxy mount kit	zeus	n/a
<b>GALAXY-50*</b>	16' 4"	OCT	1,800 lbs.	galaxy mount kit	zeus	n/a

## steel base frames

Item No.	Size	Frame Weight	Stone/Plate Weight	Totals	Stone/Steel plate details (Sold separately**)
<b>BC05XM</b>	33.5" x 7" x 9"	72 lbs.	576 lbs.	<b>648 lbs.</b>	Holds up to 16 pavers @ 36 lbs. each
<b>ZEUS</b>	6" x 56" x 56"	225 lbs.	1,600 lbs.	<b>1,825 lbs.</b>	Holds up to 16 - SB100SQ

Note: When stacking steel base weights, the **SB50R** and **SB50SQ** can only be used as the top weight.

\* It is **HIGHLY recommended** that these items be mounted using our in-ground or concrete mount kits (see page 28).

\*\* Stone paver size is 16" square, SB50SQ is 17" square and SB100SQ is 24" square.



# options

Item	Item No. (Protective Cover)	MSRP
LIBRA-20S	CD951	\$105
LIBRA-25S	CD950	\$105
LIBRA-25	CD951	\$105

Item	Item No. (Protective Cover)	MSRP
ASTRAL-TC-35S	CD9004	\$175
ASTRAL-TC-40S	CD9005	\$175
ASTRAL-TC-50S	CD9005	\$175
ASTRAL-TC-50	CD9004	\$175

Item	Item No. (Protective Cover)	MSRP
SR-27S	CD16A	\$125
SR-30S	CD16A	\$125
SR-30	CD16A	\$125
SR-35	CD16A	\$125

Item	Item No. (Protective Cover)	MSRP
POLARIS-30S	CD36-02	\$145
POLARIS-35S	CD36-02	\$145
POLARIS-40S	CD36-01	\$145

Item	Item No. (Protective Cover)	MSRP
OR-27S	CD26A-1	\$125
OR-30S	CD26A-1	\$125
OR-30	CD26A-3	\$125
OR-35	CD26A-2	\$125
OR-40	CD26A-1	\$125

Item	Item No. (Protective Cover)	MSRP
GALAXY-35S	CD46-1	\$175
GALAXY-40S	CD46-3	\$175
GALAXY-50	CD46-1	\$175

Optional Fabric	Price
Glen Raven Firesist®	Price Group 1 (+ 25%)

FIREISIST® awning fabric combines state-of-the-art flame retardant performance and UV resistance for the commercial awning, canopy and shade markets.

Specialty Canopy	Available Styles	MSRP
<b>Valance</b>	libra, orion, polaris & sirius	\$190
	astral-tc & galaxy	\$280
	astral-tc (5.0m) & galaxy (5.0m)	\$320
<b>Logo Printing</b>	libra, astral-tc & polaris	Call for pricing
<b>Designer Canopy</b>	astral-tc, libra, orion, polaris, sirius & galaxy	Call for pricing

Visit [www.resortcontract.com](http://www.resortcontract.com) for more product information.



Logo on OR-30S

# fabric



Price Group 1

Awning Grade

100% Solution-Dyed Acrylic

<b>4634</b> White	<b>4604</b> Natural	<b>4642</b> Oyster	<b>4683</b> Parchment	<b>4633</b> Linen	<b>4674</b> Wheat	<b>4628</b> Toast
<b>4672</b> Heather Beige	<b>4620</b> Beige	<b>4676</b> Cocoa	<b>4648</b> Taupe	<b>4651</b> Silver	<b>4630</b> Cadet Grey	<b>4636</b> Storm
<b>4615</b> Smoke	<b>4644</b> Charcoal Grey	<b>4684</b> Slate	<b>4608</b> Black	<b>4632</b> Ivy	<b>4637</b> Forest Green	<b>4671</b> Fern
<b>4668</b> Aspen	<b>4688</b> Basil	<b>4685</b> Ginkgo	<b>4600</b> Erin Green	<b>4645</b> Seagrass Green	<b>4673</b> Spa	<b>4643</b> Persian Green
<b>4623</b> Aquamarine	<b>4610</b> Turquoise	<b>4612</b> Aruba	<b>4664</b> Sea	<b>4669</b> Azure	<b>4675</b> Capri	<b>4624</b> Sky Blue
<b>4641</b> Sapphire Blue	<b>4652</b> Mediterranean Blue	<b>4601</b> Pacific Blue	<b>4679</b> Ocean Blue	<b>4678</b> Marine Blue	<b>4626</b> Navy	<b>4646</b> Captain Navy
<b>4659</b> Ember	<b>4665</b> Concord	<b>4603</b> Jockey Red	<b>4666</b> Logo Red	<b>4631</b> Burgundy	<b>4622</b> Terracotta	<b>4667</b> Mahogany
<b>4640</b> Black Cherry	<b>4621</b> True Brown	<b>4689</b> Rust	<b>4677</b> Tuscan	<b>4609</b> Orange	<b>4602</b> Sunflower Yellow	<b>4635</b> Buttercup





# frame finish collection



\*Special order frame finishes have a minimum order quantity. Contact your sales representative for more information and specific lead times.

**NOTE:**

– Arctic White frame finish comes with Gray component parts  
 – Silver Shadow, Urban Black and Architectural Bronze frame finishes come with Black component parts

# terms & conditions (subject to change without notice)

As a condition of doing business with Treasure Garden, Inc. dba Shademaker and its affiliates (hereinafter, "TG") all persons involved in the commercial purchase, sale, or resale of TG products (each, a "Dealer/Contract Specifier") shall be bound by the following terms and conditions (the "Agreement").

## **Distribution:**

To qualify as an authorized retail Dealer a business must:

- Reasonably accommodate purchases of anyone showing interest in TG products.
- Be moderately capable of "after the sale" service and support to the end-user and reasonably accommodating of consumer requests for such service and support.
- Retail Dealers should be qualified or trained by their TG sales representative.

TG reserves the right to respond to geographic and individual market and competitive situations by applying different policies to its various Dealers. TG also reserves the right to rescind or modify, in its sole and absolute discretion, any existing or future sales program or policy, or the credit terms (if any) extended to a Dealer. In addition, TG may terminate any authorized Dealer, for any reason or no reason, in its sole and absolute discretion and without notice.

## **Prices:**

Prices listed in the catalog are suggested retail prices. A Dealer's/Contract Specifier's cost is based on the designated Dealer classification. Ask your Sales Representative for details regarding TG's 2019 programs and pricing structure.

## **Taxes and Surcharges:**

The Manufacturer's Suggested Retail Price ("MSRP") does not include any state tax, local tax or surcharges. California sales tax may apply to shipments made within California, picked up at our California facility or drop shipped within the state of California unless we have a CA resale certification on file. For shipments out of CA the appropriate sales taxes will be added to acknowledgements or invoices unless we are provided with a valid State sales tax exemption certificate. Sales taxes will be added based on the address where the product is being shipped to. We collect sales tax in our nexus states, as of April 2018 our nexus states are CA, CO, FL, GA, IL, MA, MD, MI, MO, NC, NV, NY, OH, PA, TN, TX, UT & WA. Please note that CA, MA & MI will not accept another states resale certification or resale number for tax exempt purposes.

## **Order Procedures:**

We accept orders from an authorized retail Dealer or contract specifier accounts only. Ask your specifier sales representative for details on becoming an authorized retail Dealer or contract account. If you place an order with Treasure Garden and you or your designee accepts delivery of any goods in relation to the order (whether or not you believe the delivery conforms with the order) you will be bound by the terms and conditions of our 2019 catalog. If you do not accept all of the Catalog Terms you must notify us in writing within 10 days of receiving your acknowledgement or the goods, whichever occurs sooner, to cancel or return the order at your expense. If you fail to do so, you will be bound by the Catalog Terms. In the event of a conflict between the terms on any purchase order, invoice, acknowledgement, or other document and the Catalog Terms, the Catalog Terms will prevail.

## **Order Payments:**

Orders must be paid in advance via business check, cashiers check, credit card or wire transfer before the order is manufactured (we do not process C.O.D. orders, or hold credit card information on file). Once your order is sent in, please allow at least 3-5 days for us to process and price your order. We will email an order quote with your prices, estimated shipping charges and prepayment instructions. Once your payment is cleared from the bank, a new acknowledgement will be issued with your estimated ship date. Clearing of checks may take anywhere from 2-5 business days for any checks issued from domestic banking institutions. International checks are not accepted. It is best to pay orders via Wire Transfer on all international orders to avoid delays in processing.

To ensure that your order is processed without delay we require:

- A written purchase order (no phone orders) from an authorized Dealer/Contract Specifier including the business name, account number, phone number and purchase order number on a Sales Order Form.
- Ship date and specific shipping instructions. If you request freight collect or 3rd party billing, please provide the account number.
- Our item/style number, fabric number, type and color.
- Quantity of each style.
- Customer's name on all Special Orders.

Please note that any discrepancies in your purchase order can cause significant delays. You must review the acknowledgment for accuracy and advise TG immediately of any discrepancies or changes. Lead time starts once order is finalized.

## **Freight Charges:**

The shipping charges on your invoice may differ from those on your acknowledgement. This is largely due to instability in today's fuel economy. Please understand that these charges are assessed by the carrier, not TG. These charges can sometimes include fuel surcharges, lift gate, extra delivery charges, as well as standard pallet fees (up to and in excess of \$39 each), box pallet fees (up to and in excess of \$45 each) which may not have been indicated on the preliminary freight quotes. The pallet fees may increase depending on the cost of these items. If the freight charges are prepaid & added to your invoice, the shipping charges may include any applicable pallet charges. To ensure the most economic freight for our customers, we are constantly reviewing freight rates. If we ship your orders freight collect or 3rd party billing, we will bill your company for any applicable pallet charges.

## **Changes/Cancellations:**

No cancellations, changes, additions or holds will be accepted for an order for which materials have been ordered or produced. Cancellations and/or changes of product or shipping dates on orders must be received at our office in writing within 5 business days of the acknowledgement date. Orders that do not follow these guidelines will be charged a 25% restocking/handling fee. Specially ordered merchandise and custom logo products cannot be cancelled, returned or refunded. Delivery dates on custom orders are estimated only and may change because of fabric, shortages, production delays, port delays, acts of nature and availability of merchandise.

## **Container Orders:**

Due to the special pricing on container orders, all containers must be prepaid via wire transfer or paid by letter of credit. A 50% deposit may be requested for customers placing their 1st import order, if there were issues with previous import orders or there is custom product that is being ordered. The deposit must be made before the order is scheduled into our system. The purchase of a container may also involve bank charges and other charges unrelated to the price of the product including but not limited to duties, storage, shipping and transportation charges, third party inspection charges whether inspected at point of origin, point of entry or point of delivery. Once your purchase order is sent in, we start reviewing and scheduling your order into our production schedule. It is important that you inform the Baldwin Park office of any order changes within 10 business days from when your order is sent in. After reviewing your purchase order, we will mail or fax an order acknowledgement with your payment instructions. We must be informed of any discrepancies or revisions to CONTAINER ORDERS in writing within 10 business days of sales order acknowledgment date. No cancellations are allowed. When placing orders, please be mindful of Chinese New Year. Generally, our manufacturing schedule is tight around that time.

## **Order Scheduling:**

Deliveries are subject to fire, storm, flood, war, rebellion, riot, strike or labor trouble, interruptions to transportation, perils of navigation, damage to factory, equipment of facilities, governmental mandates, including the exercise of acts of God, failure of our sources of supply in whole or in part, and other cause beyond our control. We shall not be liable for any damages or failure to deliver or delay in delivery due to any such causes. If possible, we will attempt to



ship merchandise the week of the requested ship dates. However, in order to maintain an orderly schedule, we reserve the right to schedule the merchandise shipment to the nearest available production schedule and to ship accordingly. Our regular business days are Monday through Friday.

#### **Back Order/Partial Shipments:**

Due to the considerable number of items we offer, we may not initially be able to ship or deliver your entire order. In such event the balance and/or entire order thereof will be back-ordered and shipped and delivered at a subsequent time or times. Standard shipping charges will apply to partial or back order shipments.

**ALL SHIPMENTS** - TG shall, in the event of no routing instructions from the buyer; select a carrier, which it feels, in its sole discretion, can adequately handle each shipment.

#### **Freight Claims:**

All merchandise is delivered to the carrier in factory new condition.

Our FOB shipping points are Baldwin Park, CA or Ningbo, China.

The FOB location depends on your order type and product availability.

The carrier accepts responsibility for the safe delivery upon acceptance of the shipment. TG should be notified immediately regarding any claims. Claims for loss or damage sustained in transit must be filed by the Dealer, as follows:

#### **Visible Damage:**

It is the Dealer's/Contract Specifier's responsibility to check the merchandise and file a claim with the carrier if the shipment was made using the dealer's carrier and account. Request a claim form from the delivering carrier and file your claim immediately. If the shipment was made using TG's carrier and account, it is the Dealer's responsibility to check the merchandise and notify TG immediately of the situation so that a claim can be filed. In either situation, make a notation on the Bill of Lading as to the nature and extent of the damage and obtain a signature of the carrier's agent. (Failure to adequately describe this information may result in the carrier refusing to honor the claim and TG will not, under any circumstances, be liable for damage sustained in transit).

#### **Concealed Damage:**

If damage is discovered when unpacking the merchandise, immediately mark the damaged area and submit a written request for the carrier to inspect. Attach a copy of the concealed damage information. Do not remove the merchandise from the original carton until the carrier inspection is complete. If the merchandise was shipped using TG's carrier and account, it is the Dealer's/Contract Specifier's responsibility to notify TG immediately of the situation so that a claim can be filed. Concealed damage needs to be reported and claim filed within 5 days for all carriers.

#### **Shortage:**

It is the Dealer's/Contract Specifier's responsibility to inspect all merchandise and to file claims with the carrier in the event of product shortage. Make a notation on the Bill of Lading as to the number of cartons short. TG must also be notified immediately of any shortages. File the claim with the delivery carrier immediately. No claim for shortages, damaged items or errors will be honored unless it is made in writing on the Bill of Lading immediately upon receipt of the shipment. Notwithstanding anything to the contrary in this Agreement, failure to make a claim on the Bill of Lading will constitute a waiver of any rights to a refund or credit.

#### **Return Goods:**

No returns will be accepted without a written Return Authorization (RA#) from the factory. It is the Dealer's responsibility to follow routing instructions. Please fax in a request for an RA#. Your request must include the following information:

- Company name, contact name, number & store hours;
- The TG invoice and/or acknowledgement;
- The item no., number of units to be returned and carton total;
- The reason for the return; and
- Which carrier will be returning the goods and the date of the shipment.

Any item that is returned for credit that is not under TG's warranty policy is subject to a 25% restocking fee (and must be properly packaged) plus inbound and outbound freight charges, if applicable. Any item that is returned for repair or replacement that is not under TG's warranty policy is subject to the applicable

repair charges listed in the "Other Fees" section, below. TG will only organize the return of product for warranty determination from the original point of shipment within the US and Canada. Per the Treasure Garden Limited Warranty, Treasure Garden restricts warranty service for TG products to the country where Treasure Garden or its authorized TG retail Dealers originally sold the product.

#### **Errors:**

There may be errors in the prices, descriptions or images of certain merchandise in our catalog or sales material. We reserve the right to restrict orders of those items.

#### **Other Fees:**

These fees apply to both contract specifiers accounts and retail Dealers.

- Non-warranty repairs are subject to a labor charge of \$35 per hour plus applicable parts, inbound and outbound freight charges. Please allow at least 5 business days for processing.
- A \$25 service charge will be assessed on any returned check.
- Pallet fees, residential delivery fees, lift-gate fees, and "call before delivery" fees vary depending on the carrier. Pallet fees may be billed to your invoice if your order is sent freight collect or 3rd party billing.

#### **Shipping:**

Most products can be shipped using parcel companies (UPS, FedEx or other). Some Shademaker products must be shipped with a trucking company. TG can only ship to addresses in the US and Canada. If shipping to Canada, you must have your own broker to clear items through customs and this information must be provided with the purchase order.

#### **Treasure Garden Storage Policy:**

We reserve the right to assess storage fees if you are not able to receive the product when Treasure Garden is ready to ship, storage fees will incur after a 3-day grace period\*. The grace period starts the day after the original Estimated Ship Date on your Order Acknowledgement (or the date the product is ready to ship). When the grace period expires, the following storage policy and pricing will be applied:

- Un-palletized orders are \$50 per day\*
- Palletized orders are \$50 per day\*; plus an additional \$20 per pallet
- \* All time frames referenced in policy are business days
- † Customer is responsible for all shipping charges if they are unable to receive shipment when carrier is ready to deliver. This includes but is not limited to, storage and re-delivery fees.
- †† Storage is not available for Cash In Advance customers.

#### **Payments:**

Payment will be accepted in US Dollars only. If a deposit or pre-payment is paid by a standard business check drawn on a domestic banking institution, please allow 2-5 business days from TG's deposit date for your funds to clear. If paid by a standard business check drawn on an International banking institution, please allow 4-6 weeks from TG's deposit date for your funds to clear. If your deposit is prepaid via wire transfer, please allow (1) business day for your funds to clear. Invoice payments should be sent so as to be received on or before the due date at our corporate office in Baldwin Park, CA at the address in the "Notices" section, below. Payments made in a different manner may be delayed.

#### **Pricing:**

"MSRP" means the Manufacturer's Suggested Retail Price as set forth in this Catalog. "MAP" means the Minimum Advertised Price as set forth in this paragraph. Dealers must adhere to MAP requirements when advertising via any traditional media, in all online advertising, online comparison price shopping, and landing pages. Dealers may not advertise TG products at less than the MAP, which cannot exceed 30% off TG's MSRP, inclusive of all discounts such as coupons, promo codes and sales tax. In addition, no advertisements may state or otherwise suggest that the TG MSRP is higher than the actual MSRP as set forth in this catalog.

#### **Minimum Advertised Price Requirements:**

As in any Minimum Advertised Price ("MAP") program, the intent is to uphold the integrity of the Treasure Garden line of products and protect the investments made by Treasure Garden and its Dealers and retail partners. Violating MAP requirements only serves to devalue the brand in the eyes of the consumer.

These MAP requirements apply to any Dealers advertising TG products via traditional media including, but not limited to, newspapers, mailers, inserts, circulars, magazines, catalogs, television and radio. In addition, the MAP requirements apply to any Dealers selling or advertising TG products online and/or having a checkout/cart system.

**MAP Policy Violation Enforcement:**

TG reserves the right to determine, in its sole and unfettered discretion, whether a violation of the MAP requirements has occurred. If TG determines that a Dealer has violated the MAP requirements, TG may, in its sole and unfettered discretion, terminate its relationship with the Dealer without notice or an opportunity to cure. The Dealer agrees that money damages or other legal remedies would not, standing alone, be a sufficient or adequate remedy for any breach or violation of the MAP requirements. As such, in addition to all other remedies available to TG, TG shall be entitled to an injunction restraining such breach or violation and to other equitable relief, including specific performance, without a bond or other security being required. MAP Policy may vary for international dealers, please see your local sales representatives for details.

**Product Advertising:**

All TG products advertised may include the Treasure Garden name in the product description. Product advertising may include proprietary names (e.g., O'bravia®, Solefin®, etc.) and the Treasure Garden logo in product descriptions. Dealers may use their own images of TG products that they have taken themselves OR use images offered in TeamTG. Treasure Garden logos and logos of proprietary products will be provided on TeamTG. The Dealer's permission to use the Treasure Garden brand, tradenames, logos, images, and any intellectual property is subject to the Dealer's strict compliance with this Agreement including, but not limited to, the MAP requirements.

**Bulk Sale Restrictions:**

If a Dealer decides to resell product to a third party said Dealer is responsible for any warranty or service issues, as well as is still bound to this agreement. The third party is not under agreement with TG, it is the Dealer that is doing business with TG.

**Duty to Notify TG of Complaints:**

Dealers shall make a careful and thorough inspection of all goods received. Subject to and without limitation of the requirements of the "Freight Claims" section above, Dealers must notify TG in writing of any complaints or issues, whether existing or reasonably foreseeable, relating to TG's performance including, but not limited to, discrepancies in quantity or description of items delivered, defects or potential defects in items delivered, or any other issue whatsoever relating to TG's performance (except issues relating to billing disputes, which are dealt with in the next section.) Notice shall be provided to TG within 30 days of: (i) the Dealer's receipt of any defective or non-conforming goods, or (ii) the time any other issue complained of came, or should, with reasonable care, have come to Dealer's attention – whichever is earlier. Unless timely notification is received by TG in accordance with the terms hereof, which notice shall identify with particularity all complaints or issues asserted by the Dealer, the Dealer irrevocably waives any and all complaints relating to any defective or non-conforming product or any other issue whatsoever relating to TG's performance and the Dealer shall have no recourse against TG. The Dealer shall be solely responsible for retaining proof that the written notice required by this section was received by TG.

**Payment Obligations For Retail Dealer and Contract Specifiers:**

Dealers/Contract Specifier's agree to examine immediately upon receipt each of TG's statements of account, invoices, or other billing statements (collectively, "Bills"), and to notify TG in writing of any disputed Bills within 10 days of receipt. Such disputes may include, but are not limited to, disputes relating to charges for items that were billed but not received; charges for product that was received but not ordered; or charges for items that were returned, refused, credited, or have a freight claim pending. Dealers will not withhold payment when disputes arise. Only the disputed portion of a timely disputed past-due balance may be withheld. Unless timely notification is provided to TG in accordance with the terms hereof, which notice shall identify with particularity any and all objections to any of TG's Bills, the Dealer irrevocably waives any and all objections to TG's Bills. In addition, the Dealer agrees that its obligation to

pay TG is separate and independent from any obligations TG may have to the Dealer. In the event the Dealer fails to pay TG in accordance with the terms hereof, the Dealer irrevocably waives the right to assert any and all claims, offsets, or any other defenses whatsoever to TG's right to payment. The Dealer further agrees that any payments to TG may be applied to any invoices or other indebtedness owed to TG, in TG's sole and absolute discretion. The Dealer shall be solely responsible for retaining proof that the written notice required by this section was received by TG.

Statements are sent on the 1st business day of each month.

**Attorneys' Fees:**

The Dealer agrees that it shall be liable for all of TG's attorneys' fees (including local counsel fees), experts' fees, accountants' fees, court fees, collection costs, collection agency fees (if applicable), and any other expenses, whether or not incurred in connection with litigation or arbitration, arising from the breach of any term of this agreement by the Dealer/Contract Specifier, and/or in connection with the enforcement of any judgment or award rendered in favor of TG.

**Governing Law:**

You agree that all matters relating to your purchase and use of TG products, including all disputes, will be governed by the laws of the United States and by the laws of the State of California without regard to its conflicts of law provisions. You agree to the personal jurisdiction by and venue in the state and federal courts in Los Angeles County, California, and waive any objection to such jurisdiction or venue.

**No Waiver:**

None of TG's rights hereunder will be deemed to be waived or modified in any way based upon the manner in which this Agreement is performed or TG's failure to enforce its rights hereunder or insist on strict and timely performance of the Dealer's/Contract Specifier's obligations. Without limitation to the foregoing, acceptance of payment outside of the stated credit terms shall not operate as a waiver of the stated credit terms.

**Limitation on Liability:**

In no event will TG be liable to the Dealer/Contract Specifier for any lost profits, lost savings, or any consequential, incidental or special damages arising out of or in connection with the parties' relationship, even if TG has been put on notice of the possibility of such damages. Without limitation to the foregoing, under no circumstances will TG be liable to the Dealer/Contract Specifier for punitive damages.

**Disclaimer:**

Please note that TG, reserves the right to alter or modify product styles and to discontinue frames and fabrics without notice.

For more information about TG products, please contact us at: (626) 814-0168, (626) 338-8810 or email: [info@treasuregarden.com](mailto:info@treasuregarden.com) or [info@shademakerusa.com](mailto:info@shademakerusa.com)

**Notices:**

All written notices required hereunder shall be ineffective unless sent to the following addresses by Federal Express and email:

**info@shademakerusa.com** - and - **Shademaker**  
**13401 Brooks Drive**  
**Baldwin Park, CA 91706**

**Headings:**

Section headings are inserts for ease of reference only and shall have no effect on the interpretation of this agreement.

**If you are a Treasure Garden dealer, refer to the Terms and Conditions in the Treasure Garden catalog.**



# maintenance

## **maintaining the shademaker frame and fittings**

1. Hose mast and frame with water periodically, more often if installation is in a salty or industrial environment.
2. Inspect the installation fitting, mount bolts, rib spacers, etc. on a regular basis and tighten if necessary.

## **maintaining the shademaker canopy fabric**

1. Clean up spills and stains right away. Spills can be removed by using a clean absorbent cloth.
2. For general maintenance, use a soft brush to remove dust and dry soil. Wash down with clean, warm water (i.e., garden hose) every so often to avoid dirt becoming ingrained. Allow the fabric to air dry before closing the canopy.
3. If a thorough cleaning is necessary, sponge over the fabric using a mild soap solution (2% solution). Rinse well with plenty of water to remove all soap residue.
4. Never use detergents, cleaning fluids or solvents. Grease and oil stains may be removed by using turpentine or similar with an absorbent cloth.
5. Please visit the fabric websites for more details: [www.shademakerusa.com](http://www.shademakerusa.com) or [www.sunbrella.com](http://www.sunbrella.com)
6. Use protective canopy cover during storage or when not in use.

## **general guidelines**

1. Shademaker highly recommends that no umbrella, regardless of size or weight, ever be left unattended in the open position. In windy conditions, it is further recommended that umbrellas be closed, removed from their base, and stored, or laid horizontally. This will reduce the risk of damage to your umbrella, furniture, and other belongings or property. To ensure stability of your umbrella, please observe proper placement, and use sufficient weight (base). This catalog contains minimum recommendations for necessary weight; but this can vary, depending on the conditions in your particular area.
2. **NOTE:** Wind damage (or any damage caused by acts of nature) is not covered under warranty.
3. Sufficient base weight must be used to secure umbrellas at all times. Please see individual product pages for recommended minimum weight requirements for free-standing applications. Mounting your umbrella to an existing deck or patio is always the preferred method of securing your umbrella above all other methods. We recommend a licensed contractor to secure your Shademaker umbrellas.

## **mark-off/crazing fabric**

**NOTE:** Sunbrella Awning/Marine fabric is treated with a finish which gives the fabric its water repellency and a firmer hand which helps in the sewing and fabrication of the products. Mark-off/Crazing may appear as white scuff marks or thin white lines on the fabric which will normally diminish or go away with normal weathering and will not affect the overall performance of the product.

# warranty

Shademaker manufactures all its shade styles from the finest aluminum alloys to ensure the strength, durability, and integrity of each and every style. We pride ourselves as a totally vertical operation. This means that we manufacture and produce over 90% of the components used in our products from the raw state. We can monitor every stage of the manufacturing process and maintain a consistent level of quality.

Our only business and focus is shade and shade type products. Our goal is that each and every Shademaker style will exceed your expectations at a competitive price that will make you smile.

**NOTE: Wind damage is not covered under any manufacturer's warranty.**

Our umbrellas are serviceable, meaning that parts can be ordered under warranty at no charge, if found that the damage is a manufacture defect and/or purchased out of warranty to make them whole again.

**5 Year Limited Warranty includes the LIBRA, ASTRAL-TC, SIRIUS, POLARIS, ORION and GALAXY styles.** This includes the mast, boom, head fitting, elbow, center pole/sidepost, arms, ribs, top and bottom hub, and stainless steel hardware only. If there is damage under the warranty, Shademaker will replace and/or repair any item listed in this category at its discretion. Labor charges are not covered under this limited warranty.

**5 Year Limited Warranty applies to Sunbrella Firesist®, Sunbrella Firesist® PLUS and Sunbrella® furniture grade, and O'bravia® awning grade fabrics.** Labor charges are not covered under this limited warranty.

**10 Year Limited Warranty includes the Sunbrella® awning & marine grade Fabric Collection.** Visit [www.sunbrella.com/warranty](http://www.sunbrella.com/warranty) for more details. Labor charges are not covered under this limited warranty.

**1 Year Limited Warranty covers base wheels and the powder coat finish on all bases.** If the powder coat finish flakes, bubbles, peels or loses color; Shademaker will re-finish or replace the defective bases at its discretion. Normal wear and tear is not covered under this limited warranty. Labor charges are not covered under this limited warranty.

**Caution:** Seaside and indoor pool use, salt & chlorides can accumulate on the powder coat finish, leading to finish failure. Failure or neglect to make needed cleanings may cause paint to blister, and such failure will void limited warranty.

**Exclusions:** Wind damage, acts of nature (such as, but not limited to, freezing or any type of extreme weather). Failures caused by abusive use and normal wear and tear are not covered under this warranty. Any Galaxy style that does not have spacer buttons installed.

**International Returns:** If an item is found to be under warranty Shademaker shall only be responsible for ground shipping charges to the location of the product within the continental United States and Canada. Any duties, express, international or special shipping charges are at the expense of the retail dealer or consumer.

## **IMPORTANT RESTRICTION FOR SM PRODUCTS WARRANTY SERVICE:**

Shademaker restricts warranty service for SM products to the country where Shademaker or its authorized SM retail Dealers originally sold the product.

Those filing warranty claims will be responsible for all shipping, handling, and freight charges on all claims to Shademaker in Baldwin Park, CA. All warranty claims must be submitted with the original proof of purchase, date of purchase, name of dealer, and the description of the damage. The Shademaker warranty is not transferable. Shademaker reserves the right to repair, replace, and/or redesign any product that is returned under a warranty claim.

# logo submission form

## CONTACT INFORMATION

Date: \_\_\_\_\_ Contact: \_\_\_\_\_

Company Name: \_\_\_\_\_

Project/Logo Name: \_\_\_\_\_

## LOGO INFORMATION:

Umbrella Model: \_\_\_\_\_ Size: \_\_\_\_\_ Order Qty.: \_\_\_\_\_

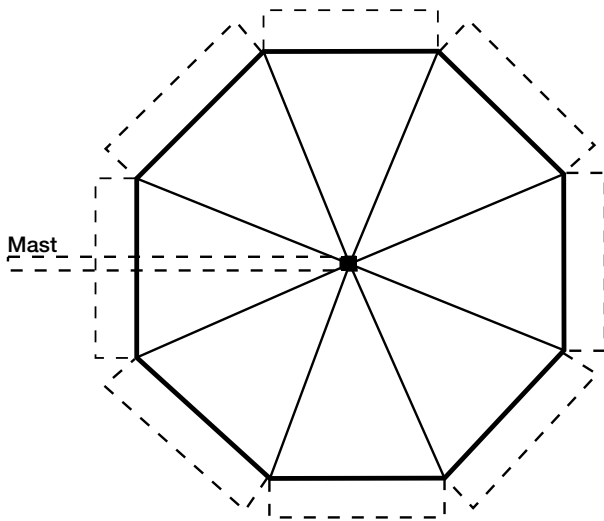
Fabric: \_\_\_\_\_ Color: \_\_\_\_\_

Number of Logos per Umbrella: \_\_\_\_\_ Totaling: \_\_\_\_\_ Printed Logos.

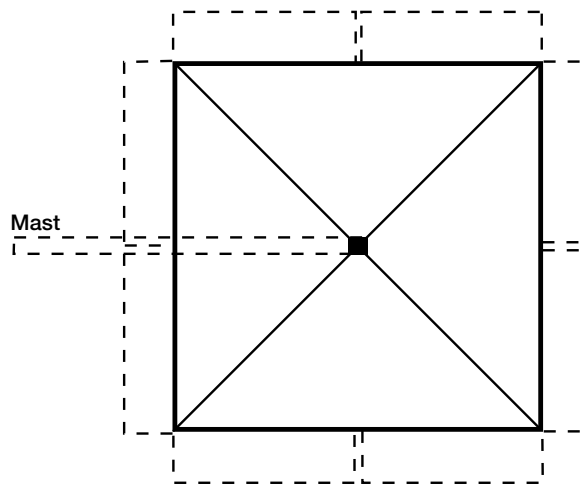
Logo Color(s): \_\_\_\_\_

Size of Requested Finished Logo(s): \_\_\_\_\_

Placement: Mark panels and/or valances below. *(For side post styles, note position of mast)*



Octagon



Square\*

\* Note: Split valance on all styles  
(except LIBRA-20S).

**In order to obtain a quote, you  
MUST submit logo in vector format,  
along with this completed form.**

### FOR OFFICE USE ONLY

Quote: \$ \_\_\_\_\_ Date: \_\_\_\_\_ Initials: \_\_\_\_\_

Additional Notes: \_\_\_\_\_